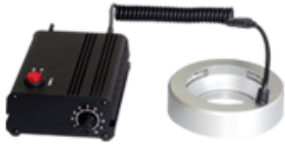


LED LIGHT

CFM341101/ CFM341111 LED Ring Light



- ◇ Power Supply: AC 90-240V 50/60Hz
- ◇ Output: DC 18-24V
- ◇ Current: 0.5A CFMx.
- ◇ Power Consumption: 6W CFMx.
- ◇ Diameter: I.D.: 54mm; O.D.: 104mm
- ◇ Height: 26mm
- ◇ Metal housing (CFM341101), Plastic housing (CFM341111)
- ◇ 78 LED Bulbs, adjustable brightness.
- ◇ Applicable to SZ Series Stereo Microscopes.

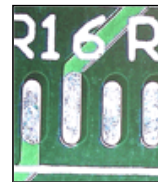
CFM341103 LED RING LIGHT



- ◇ Power Supply: AC 90-265V, 50/60Hz
- ◇ Output: 24V 6W
- ◇ Color Temperature: 6400K
- ◇ Lamp Life: Minimum 10,000 hours
- ◇ Operating Temperature: 32-104 F(0-40°C)
- ◇ Humidity Range: 0-80%
- ◇ CFMx. Opening: 62mm
- ◇ Fuse: 1A
- ◇ The Power Box Dimensions: 103x61x32mm
- ◇ 60 LED Bulbs, adjustable brightness.
- ◇ Applicable to SZ, SZ2, SZ3 and FS Series Stereo Microscopes.



CFM361103 Polarizer For LED Ring Light



Without Polarizer



With Polarizer

CFM341104 LED RING LIGHT



- ◇ Power Supply: AC 90-240V, 50/60Hz
- ◇ CFMx. Opening: 61mm
- ◇ 144 LED Bulbs, Black Cover.
- ◇ Adjustable brightness, applicable to SZ, SZ2, SZ3 and FS Series Stereo Microscopes.

CFM341105 LED RING LIGHT



- ◇ Power Supply: AC 90-240V, 50/60Hz
- ◇ CFMx. Opening: 61mm
- ◇ 48 LED Bulbs, White Cover.
- ◇ Adjustable brightness, applicable to SZ, SZ2, SZ3 and FS Series Stereo Microscopes.

CFM341303 LED RING LIGHT



- ◇ Power Supply: AC 90-240V, 50/60Hz
- ◇ CFMx. Opening: 61mm
- ◇ 48 LED Bulbs, Black Cover. Ring light is divided into 4 areas and each area is turned on and off separately.
- ◇ Adjustable brightness, applicable to SZ Series Stereo Microscopes.



CFM341305 LED RING LIGHT with AREA CONTROL

- ◇ Power Supply: AC 90-240V, 50/60Hz
- ◇ CFMx. Opening: 61mm

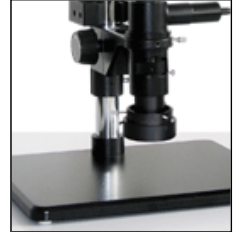


- ◇ 144 LED Bulbs, Black Cover. Ring light is divided into 4 areas and each area is turned on and off separately.
- ◇ Adjustable brightness, applicable to SZ, SZ2, SZ3 and FS Series Stereo Microscopes.



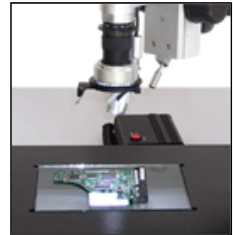
CFM342103 LED RING LIGHT for VIDEO ZOOM MICROSCOPE

- ◇ Power Supply: AC 90-265V 50/60Hz
- ◇ Power Consumption: 4W
- ◇ Diameter: I.D.:50mm; O.D.:68mm
- ◇ Height: 35mm
- ◇ 96 LED Bulbs, adjustable brightness.
- ◇ Applicable to MZ, MZ2, MZ3 Series Video Zoom Microscopes.



CFM344101 LED BACK LIGHT

- ◇ Power Supply: AC 90-240V 50/60Hz
- ◇ Output Voltage: DC 18-24V
- ◇ Current: 0.5A CFMx.
- ◇ Power Consumption: 6W CFMx.
- ◇ Dimensions: 86x52x16mm
- ◇ Active Area: 2x2" (50.8x50.8mm)
- ◇ Adjustable brightness



CFM345101 LED POINT LIGHT

- ◇ Power Supply: AC 90-240V 50/60Hz
- ◇ Output Voltage: DC 18-24V
- ◇ Current: 0.5A CFMx.
- ◇ Power Consumption: 2W CFMx.
- ◇ O.D.: 50mm
- ◇ 2W spot light, adjustable brightness, plastic housing.
- ◇ Designed for track stand and post stand.



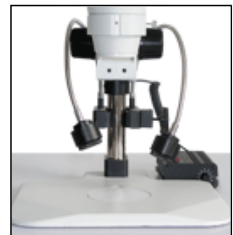
CFM345102 LED POINT LIGHT

- ◇ Power Supply: AC 90-240V 50/60Hz
- ◇ Output Voltage: DC 24V
- ◇ 30 LED Bulbs , 2.5W spot light, adjustable brightness.
- ◇ Designed for track stand and post stand.



CFM345201 LED DUAL SPOTS LIGHT

- ◇ Power Supply: AC 90-240V 50/60Hz
- ◇ Output Voltage: DC 24V
- ◇ Power Consumption: 4W
- ◇ Gooseneck Length: 240mm
- ◇ Can be attached on track stand, post stand and boom stand. The clamp opening is from 25mm (10") to 37.2mm (15.1").



CFM347101 LED DIFFUSE ILLUMINATOR








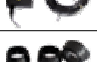







The product features excellence of low power consumption, low heat, long service life, sCFMII size and adjustable brightness. It has 48 LED bulbs with four switches to control 8 LED areas for choosing different illumination angles.

- ◇ Power Supply: AC 100V-240V, 50/60Hz
- ◇ CFMimum Power Consumption: 5W
- ◇ Output: DC 24V
- ◇ Brightness Range: 0-100%
- ◇ Current Range: 0-180CFM,
- ◇ Environment Temperature/ Humidity: 0-40°C/20-80%RH
- ◇ Dimensions: the top mount Φ (outer)78mm $\times\Phi$ (inner)60mm; The top caliber of light flux Φ 40mm; The bottom mount Φ (outer)123mm $\times\Phi$ (inner) 92mm
- ◇ Service Life: 20000 hours



Before use

After use

Picture Preview	P/N	Name	Description
	CFM341101	LED Ring Light	AC 90-240V 50/60Hz, 6W Max, 78LED Bulbs, I.D.:54mm; O.D.:104mm, Height:26mm, brightness is adjustable, metal housing, for SZ Series Stereo Microscopes.
	CFM341111	LED Ring Light	AC 90-240V 50/60Hz, 6W Max, 78LED Bulbs, I.D.:54mm; O.D.:104mm, Height:26mm, brightness is adjustable, plastic housing, for SZ Series Stereo Microscopes.
	CFM341103	LED Ring Light	60 LED Bulbs, input: 90-265V 50/60Hz; output: 24V6W; color temperature: 6400K; ring of Max. Opening: 62mm. The brightness is adjustable. for SZ. SZ2, SZ3 and FS Series Stereo Microscopes.
	CFM341104	LED Ring Light	AC 90-240V 50/60Hz, 144 LED Bulbs, Max. Opening: 61mm, brightness is adjustable, for SZ. SZ2, Sz3 and FS Series Stereo Microscopes.
	CFM341105	LED Ring Light	AC 90-240V 50/60Hz, 48 LED Bulbs, Max. Opening: 61mm, brightness is adjustable, for SZ. SZ2, Sz3 and FS Series Stereo Microscopes.
	CFM341303	LED Ring Light with Area Control	AC 100-240V 50/60Hz, 48LED Bulbs, Max. Opening: 61mm, ring light is divided into 4 areas and each area is turned on and off separately, brightness is adjustable, for SZ. SZ2, SZ3 and FS Series Stereo Microscopes.
	CFM341305	LED Ring Light with Area Control	AC 90-240V 50/60Hz, 144LED Bulbs, Max. Opening: 61mm, ring light is divided into 4 areas and each area is turned on and off separately, brightness is adjustable, for SZ. SZ2, SZ3 and FS Series Stereo Microscopes.
	CFM341904	LED Ring Light Adapter for MZ Zoom Lens	44mm Adapter, connect MZ Series of Microscope and CFM341103 LED Ring Light.
	CFM342103	LED Ring Light for Video Zoom Microscope	AC 90-265V 50/60Hz, 96LED Bulbs, 4W I.D.:50mm; O.D.:68mm, Height: 35mm, brightness is adjustable, for MZ, MZ2, MZ3 Series Video Zoom Microscopes.
	CFM344101	LED Back Light	2x2" active area, 86x52x16mm dimension, AC 90-240V 50/60Hz, output: DC 18-24V, 6W CFMx, brightness is adjustable.
	CFM345101	LED Point Light	2x2" active area, 86x52x16mm dimension, AC 90-240V 50/60Hz, output: DC 18-24V, 6W CFMx, brightness is adjustable.
	CFM345102	LED Point Light	30 LED Bulbs, 2.5W Spot Light, AC 90-240V 50/60Hz, output: DC 24V, brightness is adjustable, for track stand and post stand.
	CFM345201	LED Dual Spots Light	Power Supply: AC 90-240V 50/60Hz, output: DC 24V, 4W; Gooseneck length 240m, can be attached on track stand and boom stand , the clamp open size is from 25mm (10") to 37.2mm (15.1").
	CFM347101	LED Diffuse Illuminator	Power Supply: AC 100-240V, 50/60Hz, output: DC 24V, top mount: Φ 78mm(outer) \times Φ 60mm (inner), top caliber: Φ 40mm, bottom opening size: Φ 123mm(outer) \times Φ 92mm(inner).
	CFM361103	Polarizer For LED Ring Light	Polarizer size: outside dia.: ϕ 83.5mm, inner dia.: ϕ 47mm, dia. of receiver: ϕ 36mm, screw thread size: M38X0.75