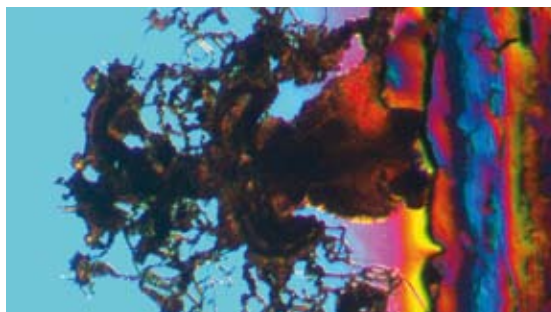
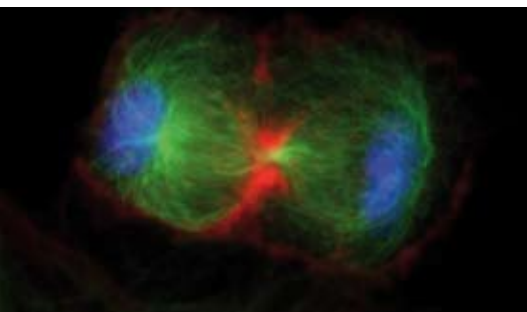




ProgRes® CCD Research Cameras

Discover highest image quality



Highest image quality

The high sensitivity of the color and monochrome ProgRes® CCD Research cameras warrants brilliant images, especially when working with low-light specimens. Expedient and smooth operation is provided by sensitive CCD sensors with high frame rates and a broad dynamic range. Especially the cooled camera models are adapted to handle mainly low-noise long-time exposures.

ProgRes® CS / MS for highest sensitivity

Due to the very large pixel size of 8.3 µm these USB 2.0 cameras are especially suitable for most sensitive applications, where also a very fast live image is required. Even moving objects can be recorded and fast processes can be followed up.

ProgRes® C14^{plus} for true colors

For detailed image analysis and informative image documentation, the Microscanning technology provided in the

scanning ProgRes® CCD Research cameras allows for capturing overview images and details in high-resolution of up to 12.5 mega pixels. The ProgRes® C14^{plus} offers genuine color reproduction in proper detail with up to 12.5 mega pixels. Its patented Color-Co-Site-Sampling records the color information exactly in three color channels for an absolutely real color image.

Benefits

- High frame rates
- Perfect color reproduction
- Highest image resolution
- High sensitivity and low noise
- Fit to any PC and microscope
- Free ProgRes® capture software for easy operation
- Safe investment
- Excellent price-performance ratio

ProgRes® CCD Research Cameras

Discover highest image quality

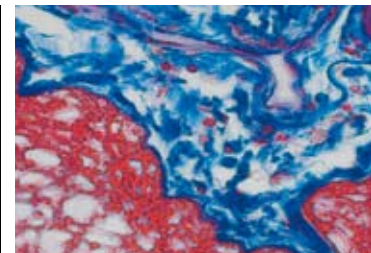
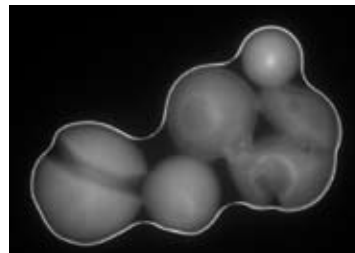
Specifications

ProgRes® camera type	CS/ MS	CF / MF	CF ^{cool} / MF ^{cool}	CF ^{scan} / MF ^{scan} / C14 ^{plus}
Image sensor	1/2" CCD progress. scan	2/3" CCD progress. scan	2/3" CCD progress. scan	2/3" CCD progress. scan
Color / Monochrome	Color / Monochrome	Color / Monochrome	Color / Monochrome	Color / Monochrome
Sensor resolution [max]	782 x 582 pixel [0.45 Mpix]	1360 x 1024 pixel [1.4 Mpix]	1360 x 1024 pixel [1.4 Mpix]	1360 x 1024 pixel [1.4 ... 12.5 Mpix]
Sensor size [H x V]	7.48 mm x 6.15 mm	8.8 mm x 6.6 mm	8.8 mm x 6.6 mm	36.07 mm x 24.05 mm "35 mm format"
Pixel size	8.3 µm ²	6.45 µm ²	6.45 µm ²	6.45 µm ²
A / D conversion	12 bit	12 bit	14 bit	14 bit
Pixel clock	29.5 MHz	12 MHz 24.5 MHz	12 MHz 24.5 MHz	12 MHz 24.5 MHz
Dynamic range	68 dB	65 ... 67 dB	67 ... 69 dB	67 ... 69 dB
Exposure times	50 µs ... 80 s	200 µs ... 180 s	200 µs ... 300 s	200 µs ... 600 s [C14 ^{plus}]
Analog gain	1x ... 8x	1x ... 8x	1x ... 8x	1x ... 8x
Max. frame rate [image size]	50 fps [782 x 582 pixel]	15 fps [1360 x 1024 pixel]	13 fps [1360 x 1024 pixel]	13 fps [1360 x 1024 pixel]
Image resolution	Binning: no Microscan.: no True color: no	2x ... 8x no no	2x ... 5x no no	2x ... 5x 4080 x 3072, 2740 x 2048 yes [C14 ^{plus}]
Cooling	no	no	yes	yes
Digital interface	USB 2.0	USB 2.0 / FireWire a	FireWire a	FireWire a
Optical connection	C-Mount (0.5x TV pref.)		C-Mount (0.63x TV pref.)	
Trigger In / Out	Synchronization with external devices; configurable via control software			
Voltage supply	USB powered	USB / FireWire powered	FireWire powered	FireWire powered
Power consumption	approx. 2.4 W	2.5 W 5 W [FireWire]	8 W	8 W
Ambient conditions	Temperature: 0 °C ... +35 °C / Humidity: 5 % ... 80 %, not condensing			
Stock conditions	Temperature: -20 °C ... +70 °C			
Dimensions [L x W x H]	89 mm x 84 mm x 93 mm [USB]		145 mm x 93 mm x 123 mm [FireWire]	
Weight	approx. 700 g	approx. 700 g / 800 g	approx. 800 g	approx. 800 g
Capture software	ProgRes® CapturePro PC / MAC (TWAIN for PC only); ProgRes® SDK			
External camera driver	available at: www.progres-camera.com			
Hardware requirements	PC: MS WIN 2000 / XP / Vista Mac: OS X 10.4 or higher 3 GHz CPU, 1 GB RAM, 64 MB graphics, FireWire a or USB 2.0			

Fields of Application

Image analysis, documentation and archiving in micro- and macroscopy in the fields of:

- Fluorescence microscopy
- Phase contrast microscopy
- Macroscopy
- Material science, geology & mineralogy
- Life science, diagnostics
- Quality control
- Pathology & cell biology
- Forensics



It is our policy to constantly improve the design and specifications. Accordingly, the details represented herein cannot be regarded as final and binding.



JENOPTIK | Optical Systems
Digital Imaging Business Unit
JENOPTIK Laser, Optik, Systeme GmbH
Goeschwitzer Strasse 25 | 07745 Jena | Germany
Phone +49 3641 65-3083 | Fax -2144
progres@jenoptik.com | www.progres-camera.com

Office USA:
Liebmann Optical Company, Inc.
1 Industrial Parkway | Easthampton, MA 01027 | USA
Phone +1 413 527 0079 Ext. 300 | Fax +1 413 527 5132
progres@jenoptik.com | www.progres-camera.com